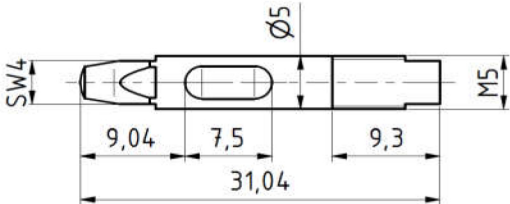
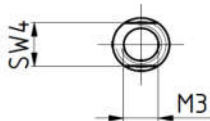
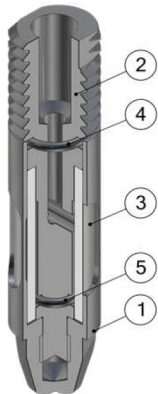
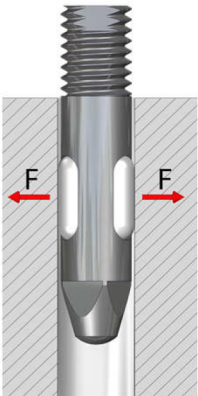


Technical Description
Internal Gripper



| Operating mode: |
|--|
| The internal grippers dip into drillings, enlarge their external diameter by expansion of the silicone membrane, under pressure, and thus frictionally engaged hold to the bore wall. When pressure is switched off, the silicone membrane self-reliant retracts into the grippers inside due to its elastic behavior. |
| Advantages: |
| Minimum installation size possible |
| low gripper weight |
| Simple gripper principle |
| cost-efficient |
| quick diaphragm replacemet possible |
| Indirect request via pressure switch in the supply line possible |

| Technical specifications | GI005 |
|---|-----------|
| Grip force (at 6 bar) [N] | 4 |
| Bore diameter [mm] | 5,1 – 6,0 |
| Allowed component weight [kg] | 0,4 |
| Gripper weight [kg] | 0.003 |
| Compressed air connection Ø | M3 |
| Assembly Ø | M5 |
| Stroke cycles at ideal application conditions | 500.000 |



| Pos. | Description |
|------|-------------|
| 1 | Hull |
| 2 | Mandrel |
| 3 | Tube |
| 4 | O-Ring 1 |
| 5 | O-Ring 2 |

| Internal Gripper Ø004... | |
|--------------------------|--------------------------------------|
| G-GI005 | External diameter 5, screw thread M5 |
| Replacement tube | |
| EG-GI005-S | for internal gripper GI005 |